
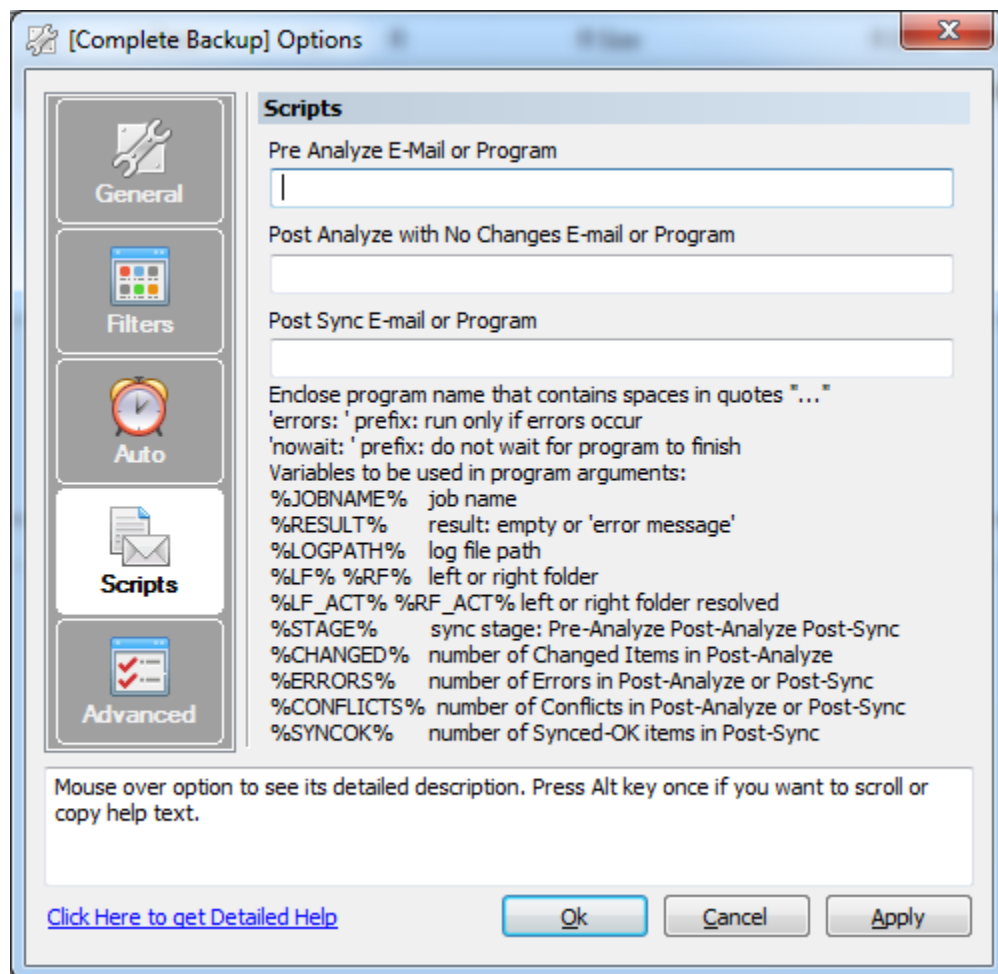


Automating Backup Jobs with Encryption and Compression

Using GoodSync's scripting capabilities you are able to highly customize the GoodSync backup process.

In the *Scripting* tab of the *Job Options*  you have the ability to execute scripts at 3 different times:

1. **Pre-Analyze** – Execute a script when the job has been initiated, but before the analyze is started.
2. **Post Analyze** – Execute a script after an analyze is finished.
3. **Post Sync** – Execute a script after the synchronize/backup has been performed.



Prerequisites

1. **GoodSync installed.**

You must have GoodSync installed and activated.

2. **7zip installed.**

You must have 7zip installed. It is free and can be downloaded here:

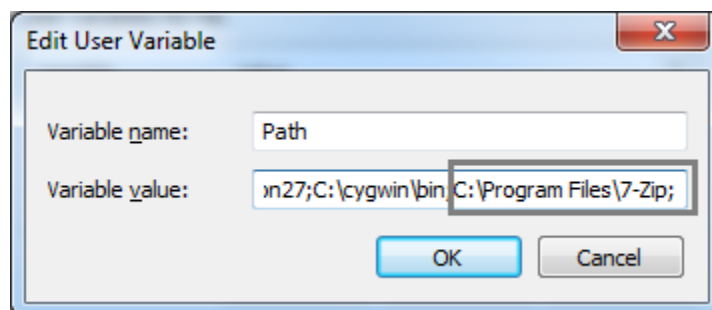
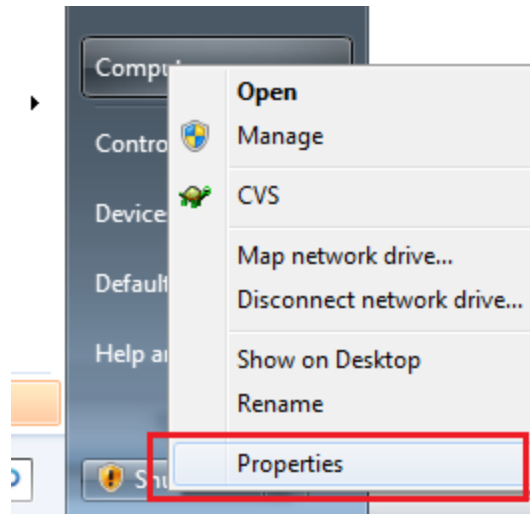
<http://www.7-zip.org/download.html>

Setup 7zip

Once you have 7zip installed, you need to add the directory that contains the 7zip executable to your %PATH% variable.

1. Click the Start button and right click **Computer**, then select **Property**.
2. On the panel on the left side of the new window, select **Advanced System Settings**. Then select **Environmental Variables**
3. Under the user variables group, select the **Path** variables and append the path to where 7zip is installed to.

E.g. `C:\Program Files\7-Zip`



Creating Our Pre-Analyze Script

When you create your job, it is going to execute a batch script that uses 7zip to compress the directories of your choice and encrypt the compressed file with a password. The only down side to this is that you normally only schedule this once a day, and the entire sum of all files is transferred every time. This is most useful for internal backups where you can reach optimal network speeds and aren't concerned about bandwidth usage.

Create a file called **backup-script.bat**, and add the following:

```
cd %userprofile%  
7z.exe a -p<password> -r Backup.zip <directory or file> <directory or file> ...
```



Remember to replace places with brackets with your own parameters:

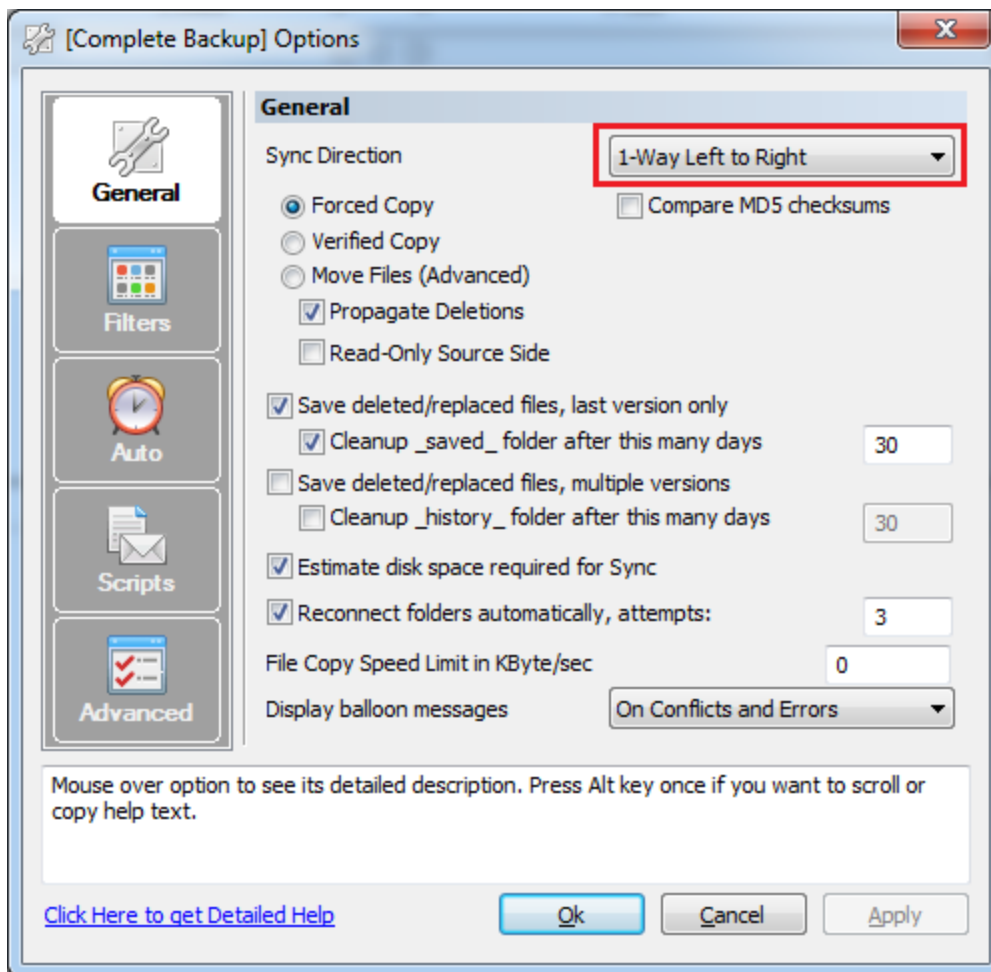
1. **<password>** - The password to encrypt the data with
2. **<directory or file>** - A file or directory that you wish to include in the compressed file. You can specify as many as you wish.

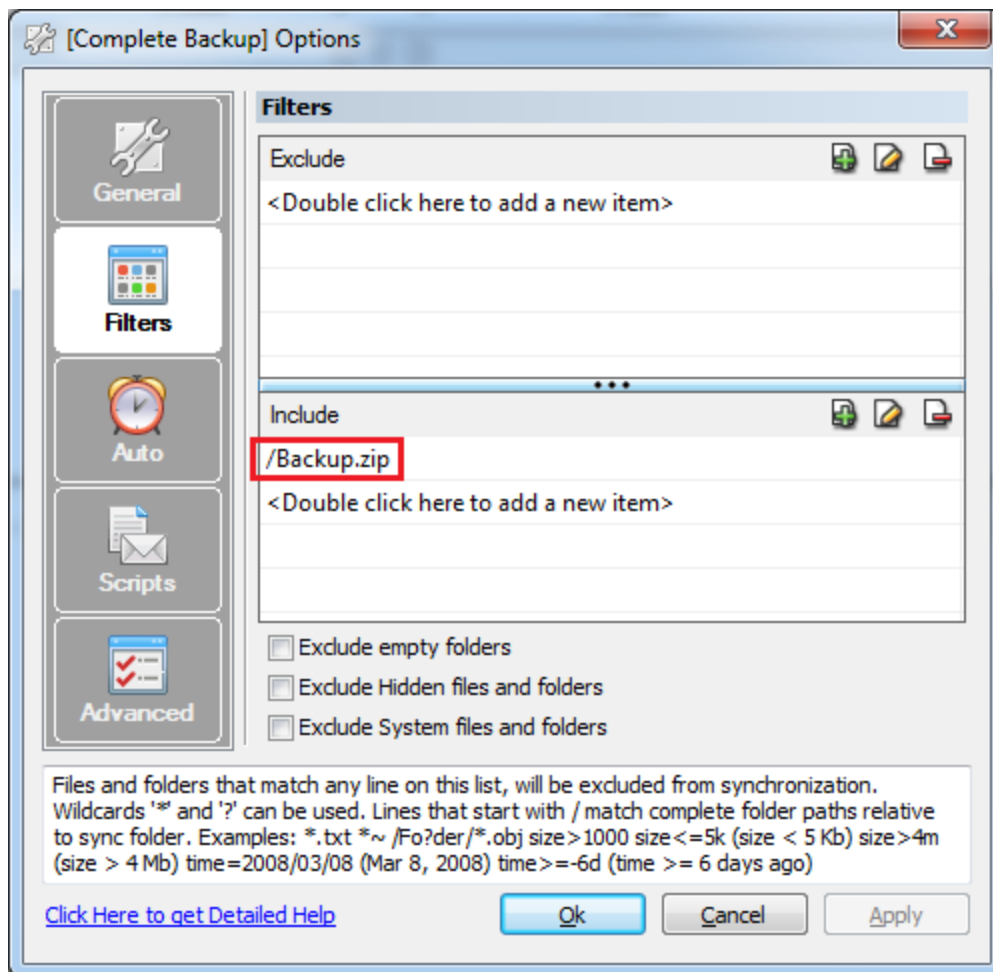
This script compresses all of the files / directories specified by the files you specified into a file called **Backup.zip** in your user directory. Once the script completes, GoodSync continues with the job.

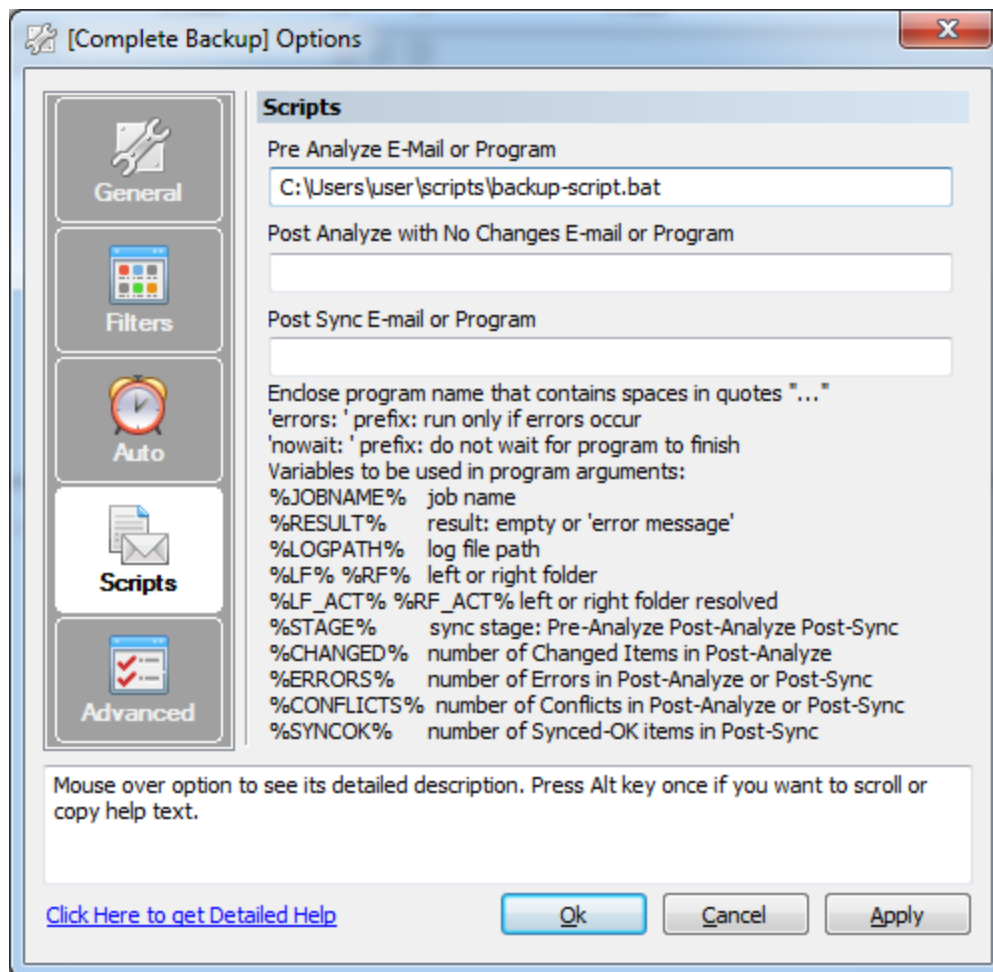
Configuring our Job

Now you are going to create a job to back up the **Backup.zip** file to a remote location. Before the job starts, it is going to call the script we created above, which creates the zip file with all of your data in it. Then, the job will continue as normal and copy the newly created zip file to our remote destination.


1. Open GoodSync and create a new **Backup** job. If you haven't created a job before, GoodSync will prompt you the first time to create a job. Otherwise, click the  in the top left corner.
2. Set the left directory to **%userprofile%**, and the right directory to any remote location of your choice by clicking the **Browse** button.
3. Open the *Job Options* by clicking the  button in the top center.
 - a. In the **General** tab, make sure that the job is set to a **One Way Left to Right**.
 - b. In the **Filters** tab, under the **Include** list, add **\Backup.zip**
 - c. In the **Scripts** tab, set the *Pre-Analyze Script* to the path of the batch script we created.











Scheduling our Job

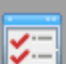
In the *Job Options*  under the **Auto** tab, tick the **Scheduled: Logged out mode** and configure a time to run the job.


General


Filters


Auto


Scripts


Advanced

Auto

	Analyze	Sync
On GoodSync start, delay sec <input type="text" value="0"/>	<input type="checkbox"/>	<input type="checkbox"/>
On Folders Connect	<input type="checkbox"/>	<input type="checkbox"/>
On File Change	<input type="checkbox"/>	<input type="checkbox"/>
On Logoff	<input type="checkbox"/>	<input type="checkbox"/>
Every <input type="text" value="2"/> Hours <input type="text" value="0"/> Min	<input type="checkbox"/>	<input type="checkbox"/>
Scheduled: Logged In Mode (Attended)		<input type="checkbox"/>
Scheduled: Logged Out Mode (Unattended)		<input checked="" type="checkbox"/>
<input type="button" value="Configure..."/>	<input type="text" value="At 5:00 AM every day, starting 2/23/2011"/>	
On RoboForm command	<input type="checkbox"/>	<input type="checkbox"/>
Do not Sync if changed files more than <input type="text" value="100"/> %		
Automatically resolve conflicts	<input type="text" value="Do Not Copy"/>	
<input type="checkbox"/> Auto Clear the tree after Sync or Analyze with no changes		

Automated Sync is not performed if more than the specified fraction of files in the Job has changed. Unusually high number of changed files indicates that something may be wrong and manual intervention is required. Set to 100% to Sync no matter how big the changes are.

[Click Here to get Detailed Help](#)